

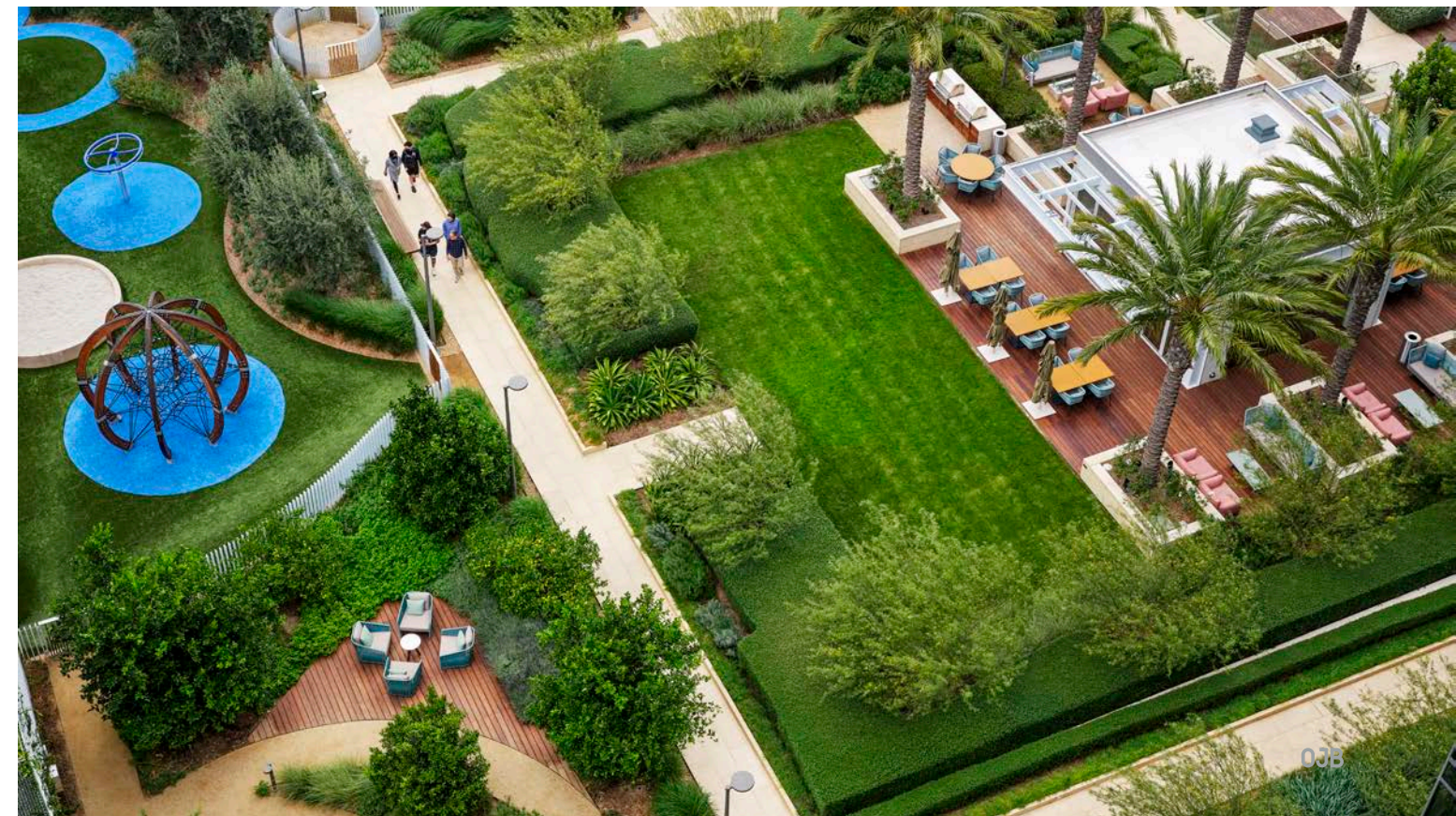
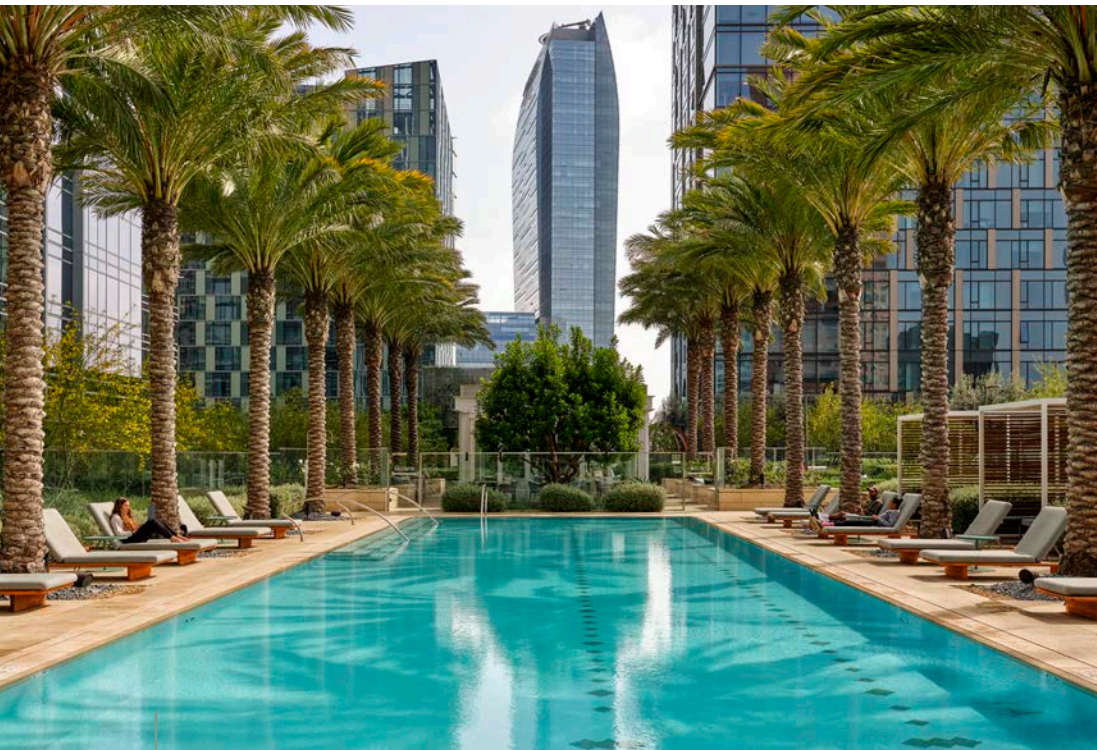
Metropolis

LOS ANGELES, CALIFORNIA

YEAR 2018

SIZE 1.9 Million SF

USE Residential, mixed-use, dog park, pools, retail, spa, gardens, children's playground, lawns, event pavillion, terraces, outdoor kitchens, gathering areas



- + Located over the parking garage and between the two towers is a 60,000 SF amenity deck with dramatic views of downtown and views west to Hollywood Hills.
- + This California Modern inspired amenity deck features a lap pool, spa area, event pavillion, activity lawns, dog park, and children's play area, all situated in a richly landscaped garden.
- + Event terraces are located midway at each of the towers and feature outdoor kitchens, gathering areas, a small event lawn, and rich ornamental planting.

Situated on the edge of downtown Los Angeles, blocks from the Staples Center, the Metropolis Residential Towers is a mixed-use complex consisting of 1,250 luxury residential units with two floors of high-end retail along the street.

