

University of Washington Behavioral Health Teaching Facility

SEATTLE, WASHINGTON

YEAR 2020–2024

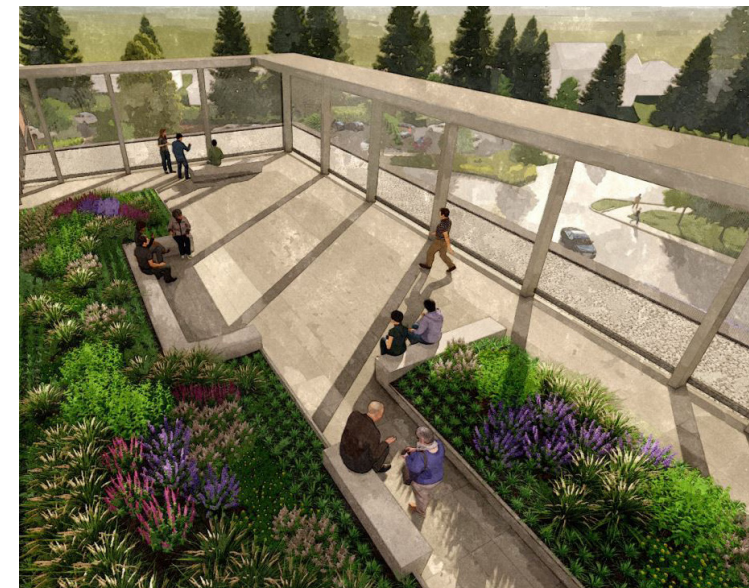
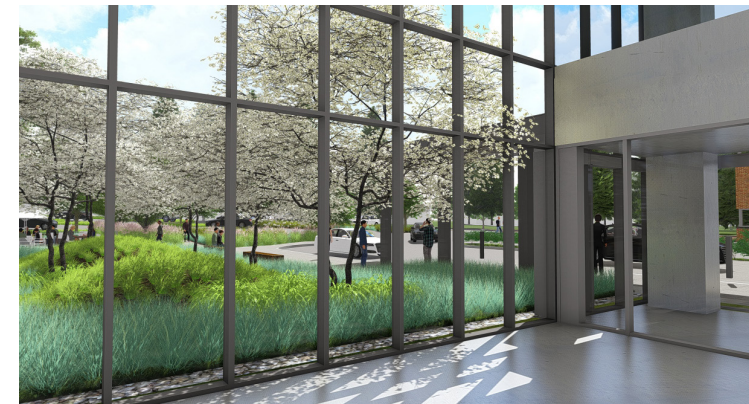
SIZE 184,000 SF

USE Wellness campus, multi-use green spaces, gardens, outdoor dining terrace, activity terrace

THEMES Improve Health Outcomes

Regional and Adaptive Planting

Campus Cohesion



- + The design highlights nature and the outdoors for all parties: the patients themselves, the visitors and staff, and the broader campus and surrounding neighborhoods.
- + The importance of healing and well-being was vital to the design team and client; connecting every aspect of the design reinforces connections between mind and body.
- + Guiding principles include establishing that all components of the activity terrace are non-toxic, areas where patients can be hidden are eliminated, and specifying only anti-ligature furnishings and plant materials (no trees)
- + Whether it be the tranquil berm garden upon entry or from the lobby and dining hall, visitors and staff see nature at every turn. The outdoor dining terrace and an activity terrace/garden are places of respite and renewal.
- + The design team preserved three exceptional western red cedars to the northeast corner of the building. Coupling the western red cedars with a small grove of tulip trees and their vibrant yellow fall foliage provides visual spectacle and a beacon of the change in seasons for long-term patients, clinicians and staff alike.

The six-story 184,000 square foot behavioral health teaching facility at the University of Washington Medical Center – Northwest is an innovative, wellness-focused campus with integrated multiple green spaces. Safe, multi-use outdoor spaces are an essential part of mental and behavioral healthcare. The landscape features native plants of the Pacific Northwest, locally sourced hardscape materials, and custom benches made of reclaimed trees from UW’s main campus.

